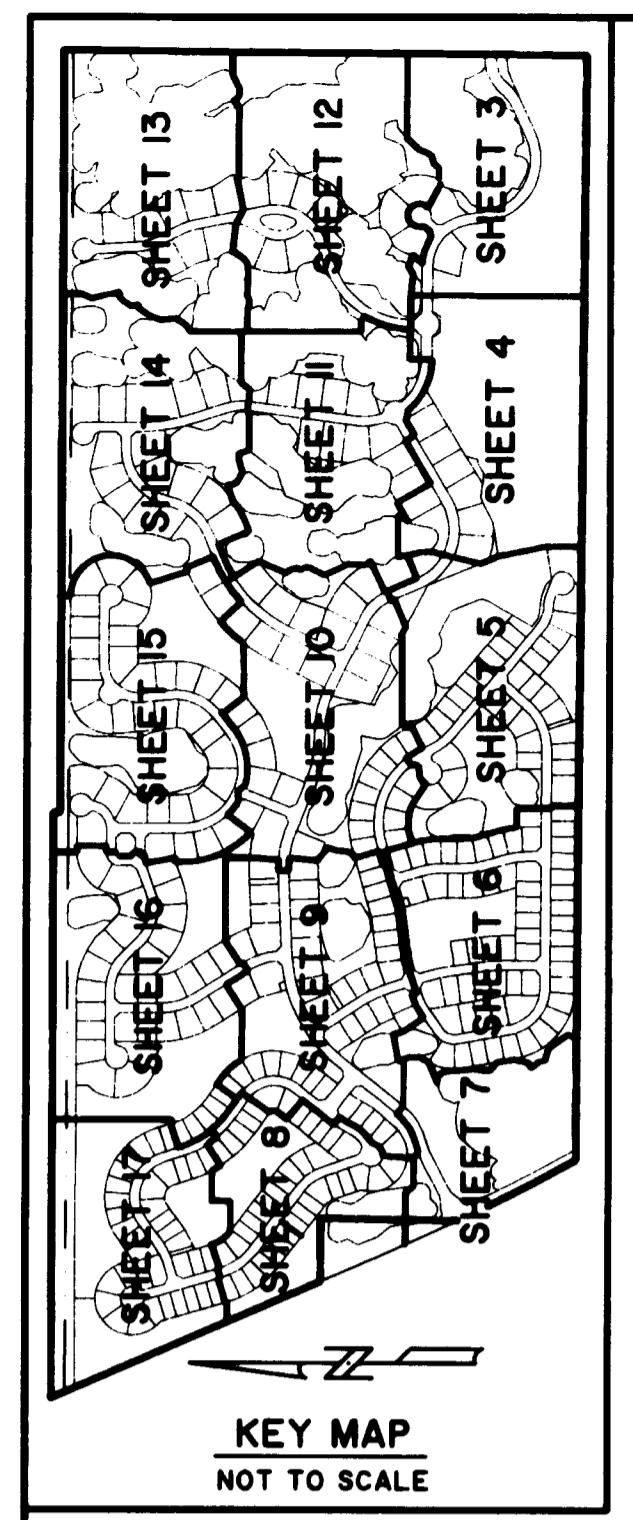


SAND TRAIL P.U.D.

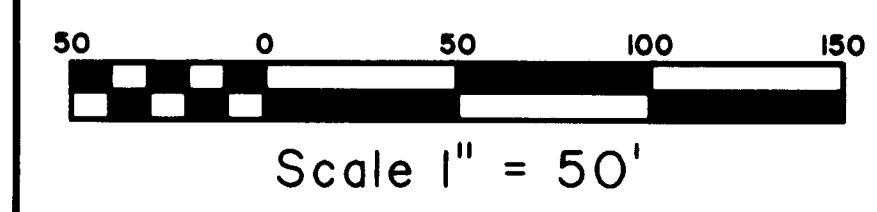
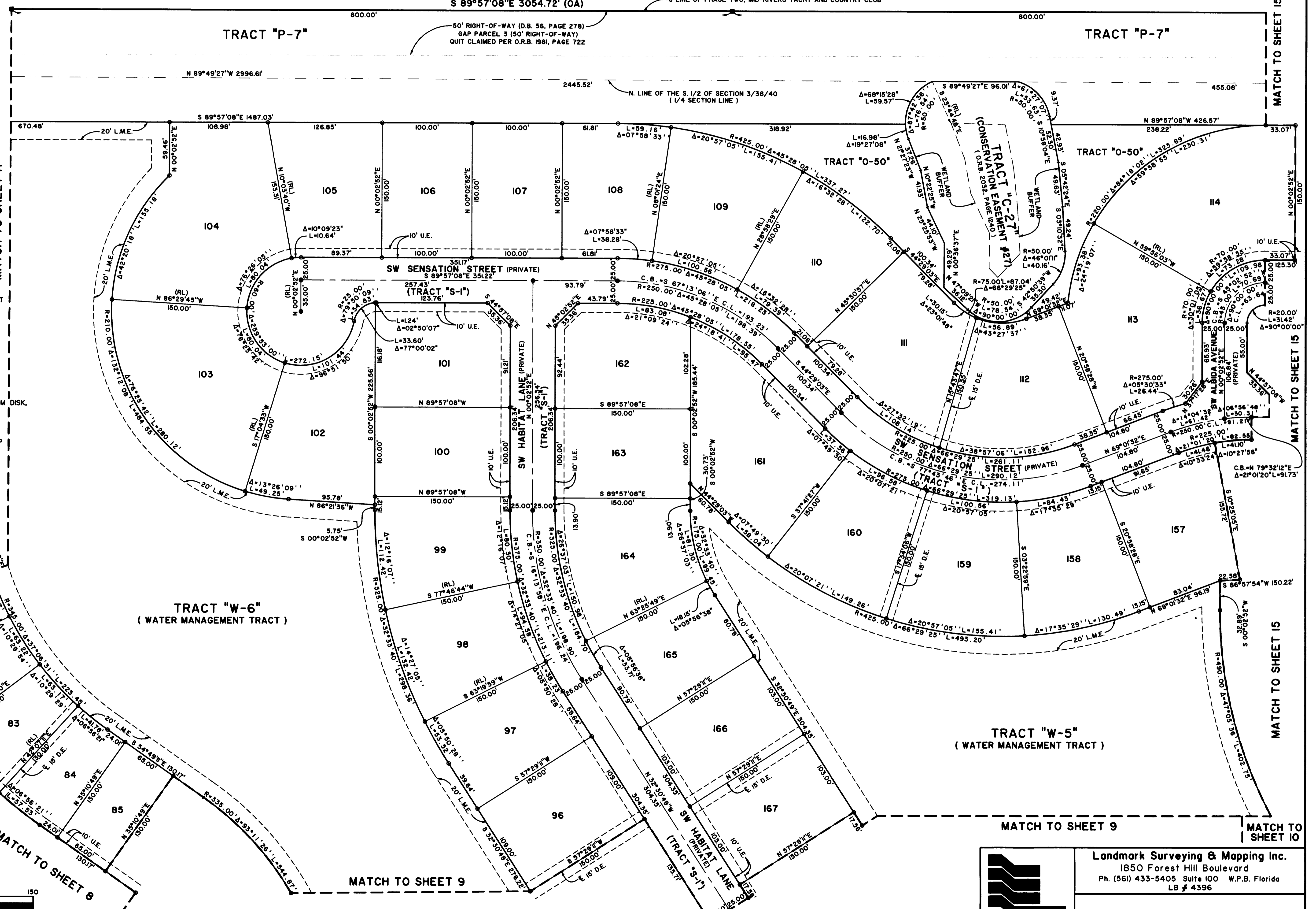
LYING IN SECTIONS 2 AND 3, TOWNSHIP 38 SOUTH, RANGE 40 EAST,
MARTIN COUNTY, FLORIDA.

PHASE TWO, MID-RIVERS YACHT AND COUNTRY CLUB
(PLAT BOOK 7, PAGE 60)

PHASE TWO, MID-RIVERS YACHT AND COUNTRY CLUB
(PLAT BOOK 7, PAGE 60)

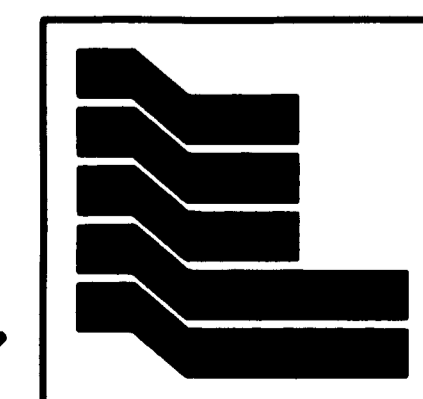


- LEGEND**
- P.C.P. = PERMANENT CONTROL POINT
 - P.R.M. = PERMANENT REFERENCE MONUMENT
 - C.M. = CONCRETE MONUMENT
 - O.R.B. = OFFICIAL RECORD BOOK
 - P.B. = PLAT BOOK
 - PG(S) = PAGE(S)
 - C = CENTERLINE
 - U.E. = UTILITY EASEMENT
 - D.E. = DRAINAGE EASEMENT
 - R = RADIUS
 - L = ARC LENGTH
 - Δ = CURVE CENTRAL ANGLE
 - P.O.B. = POINT OF BEGINNING
 - P.O.C. = POINT OF COMMENCEMENT
 - = SET 4"x4"x24" C.M. WITH ALUMINUM DISK, STAMPED P.R.M. L.B. 4396
 - = FOUND 4"x4" C.M. (AS SHOWN)
 - = SET NAIL AND ALUMINUM DISK, STAMPED P.C.P. LB 4396
 - = SET 1/2"x18" IRON ROD WITH CAP STAMPED LB 4396
 - L.M.E. = LAKE MAINTENANCE EASEMENT
 - C.L. = CHORD LENGTH
 - C.B. = CHORD BEARING
 - N = NORTHING
 - E = EASTING
 - L.S.E. = LIFT STATION EASEMENT
 - OA = OVERALL
 - RL = RADIAL LINE
 - P.U.D. = PLANNED UNIT DEVELOPMENT



NOTE: SEE SHEET 2 OF 17 FOR SURVEYOR'S NOTES

SHEET 16 OF 17



Landmark Surveying & Mapping Inc.
1850 Forest Hill Boulevard
Ph. (561) 433-5405 Suite 100 W.P.B. Florida
LB # 4396

SAND TRAIL P.U.D.

D:\BSPOTT\LEMIN\3\JMS\2632\2632.dwg Thu Feb 15 17:06:18 2007 PLOTTED BY LESLIE C. BSPOTT